

Router installation guide

for your Airtel-Vodafone fibre broadband service



Pack contents

Manufacturer
Quick set up guide



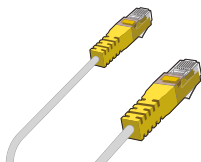
1 x DGA4134 Router



1 x Two-part power supply

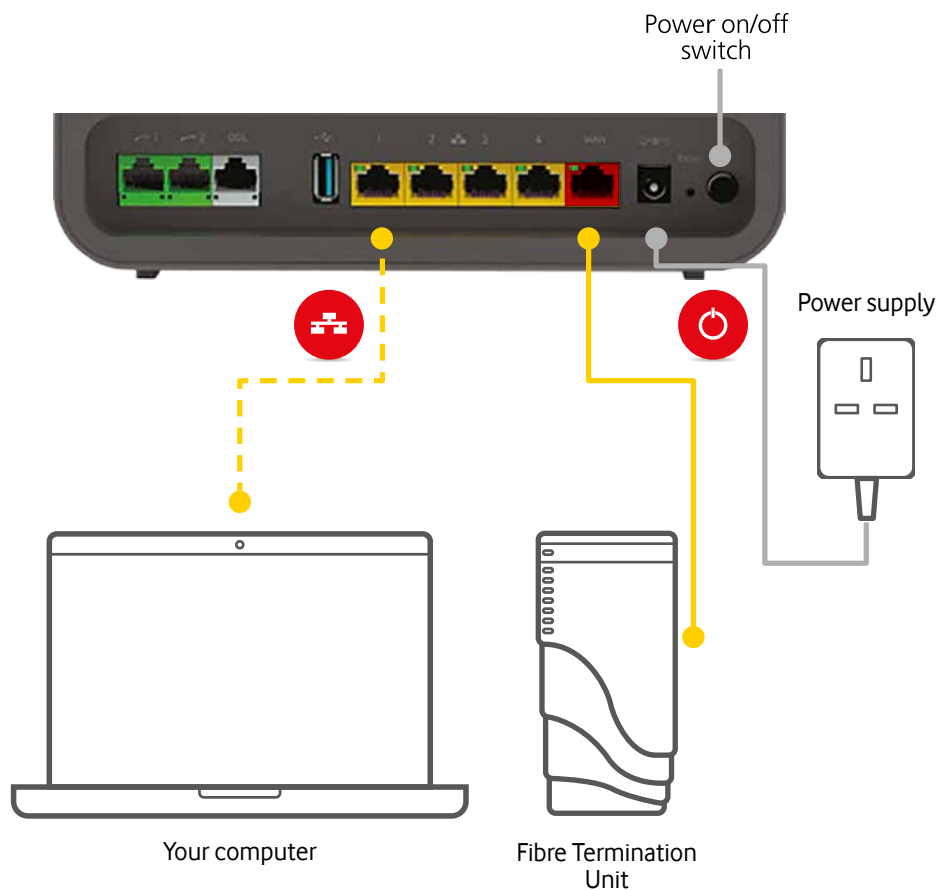


1 x Network cable



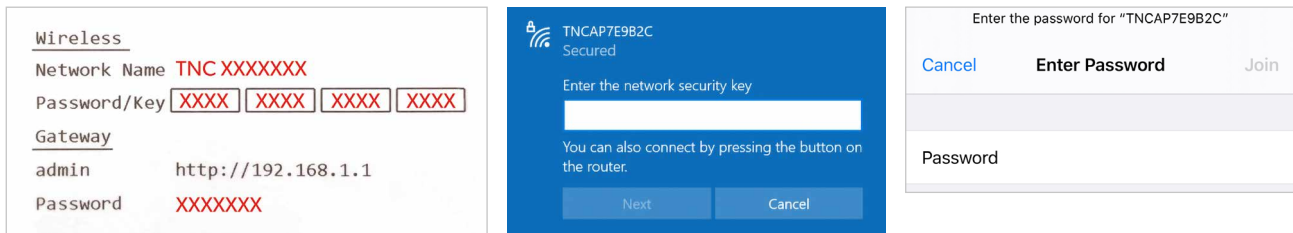
STEP 1 – Connect

1. Connect the **network cable** supplied to the **Red WAN socket** on your router and other end to **Port 1** on right hand side of your **Fibre Termination Unit**.
2. You may also wish to connect your computer to one of the router's **WAN sockets** using another **network cable** although this step is not necessary.
3. Connect the **power supply** to the nearest AC mains outlet and the lead from the power supply to the power socket on the router. Press the power button on the router to switch it on.

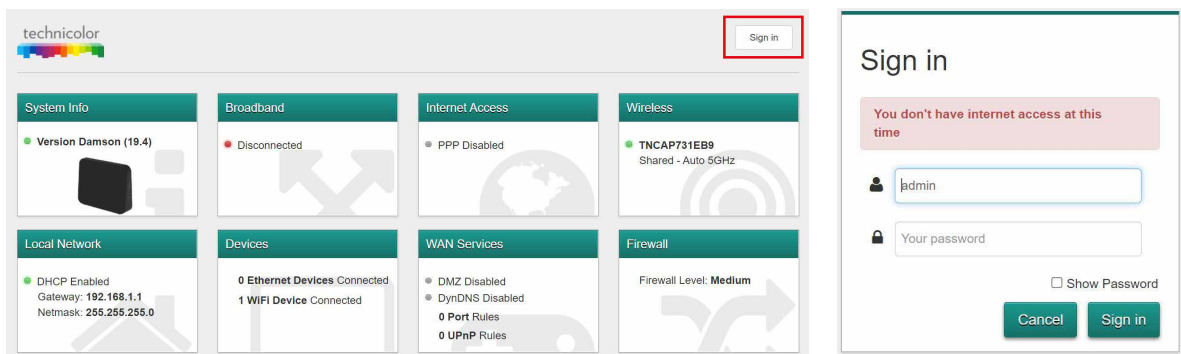


STEP 2 – Configure

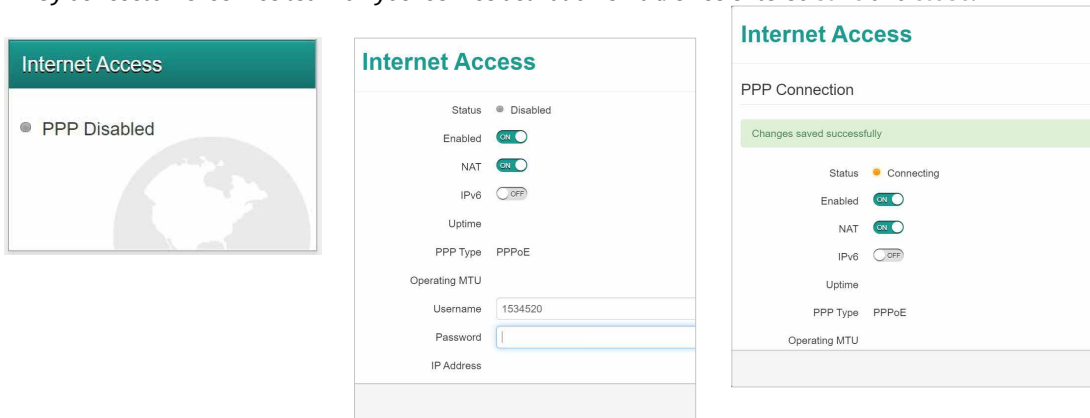
1. On your laptop or device, search for the **router's name in your Wi-Fi settings**. The router's name begins with **TNC** and can be found on back of the router. You will be asked to **connect**. To join – enter the 16 digit case sensitive **password/key** on the back of the router.



2. Enter **http://192.168.1.1** into your browser to sign into the admin site of the router. Enter the word **admin** in the sign in screen (see below right) followed by the **password** found under **Gateway** on the back of your router. Both entries are case sensitive.



3. Go to **Internet Access** and enter the **username** and **password** that has been supplied to you by our customer service team on your service activation email. Once entered **save** and **close**.



4. In the **Internet access** screen PPP connecting will display. Wait until the green light shows as connected.



5. Check router status
6. Finally – **Connect devices**
Once the broadband and internet light are **solid green** you are ready to connect your devices to Internet.